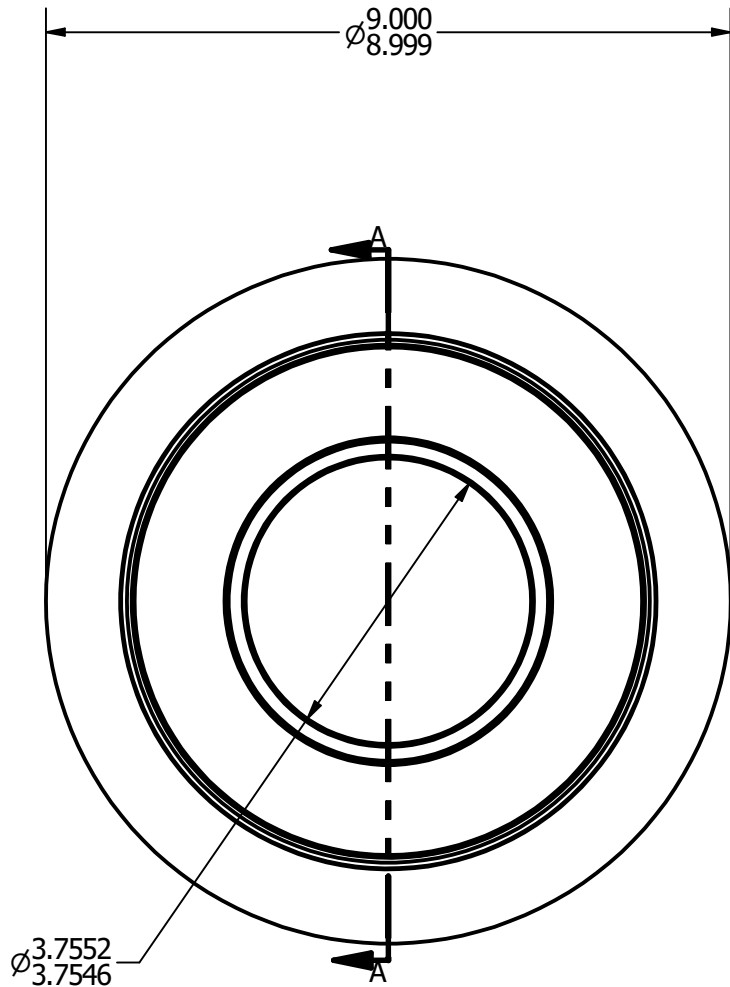
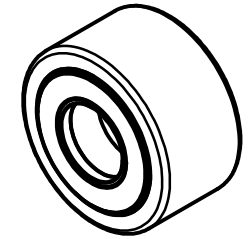
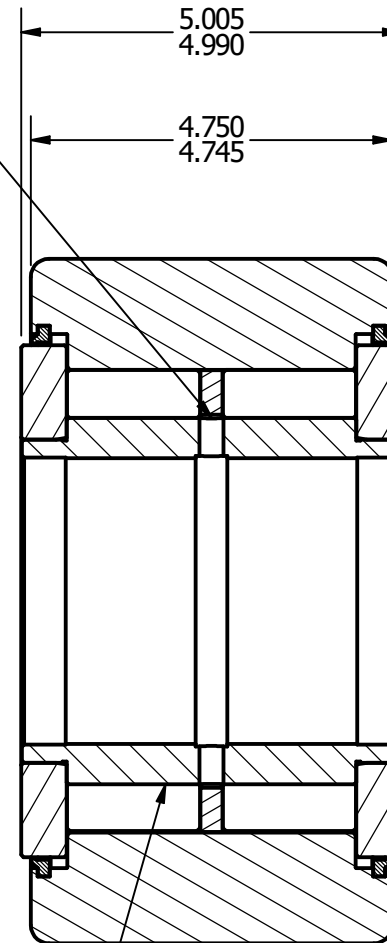


- NOTES:**  
**1. BEARING IS PACKED WITH GREASE**  
**2. ALL EXPOSED SURFACES ARE BLACK OXIDED**



Ø5/16  
 2 HOLES  
 IN LINE



ZONE HARDENED

**RADIAL BASIC DYNAMIC RATING (POUNDS) 113,260**

**MAXIMUM STATIC CAPACITY (POUNDS) 366,850**

**MATERIAL NOTES:**

- OUTER - BEARING STEEL, HEAT TREATED**  
**STUD - BEARING STEEL, ZONE HARDENED**  
**NEEDLE - BEARING STEEL, HEAT TREATED**  
**SPACER - BEARING STEEL, HEAT TREATED**  
**WASHER - COLD ROLLED STEEL, HEAT TREATED**  
**SEAL - SYNTHETIC**

CUSTOMER PART#

.XX = ± .01  
 .XXX = ± .005  
 .XXXX = ± .0005  
 ANGLES = ± 1'  
 INCH [METRIC]

CHANGE NOTE:

CARTER MANUFACTURING IS NOT RESPONSIBLE FOR TYPOGRAPHICAL ERRORS

**CARTER MANUFACTURING CO., INC.**

GRAND HAVEN, MICHIGAN 49417

REVISION

PART NAME: ASSEMBLY

SHEET 1 OF 2

**A**

AUTHOR. BY

DRAWN BY

CHK'D BY

SALES

MATERIAL

REV. BY

DATE

DATE

DATE

DATE

DRAWING NO.

JAF

8/2/2006

YNB-288-S