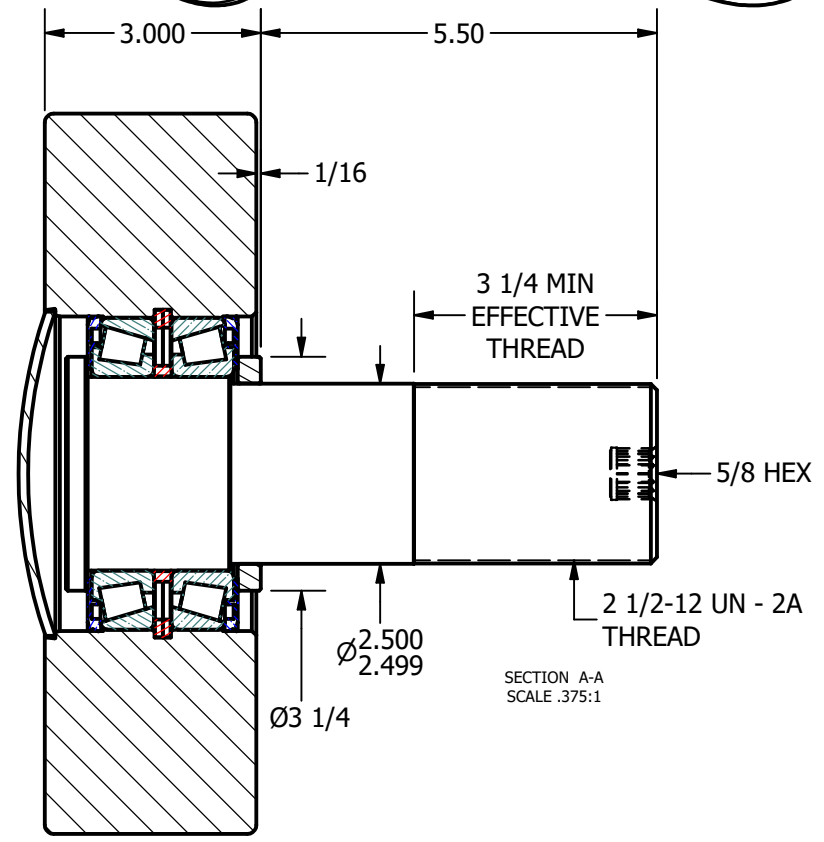
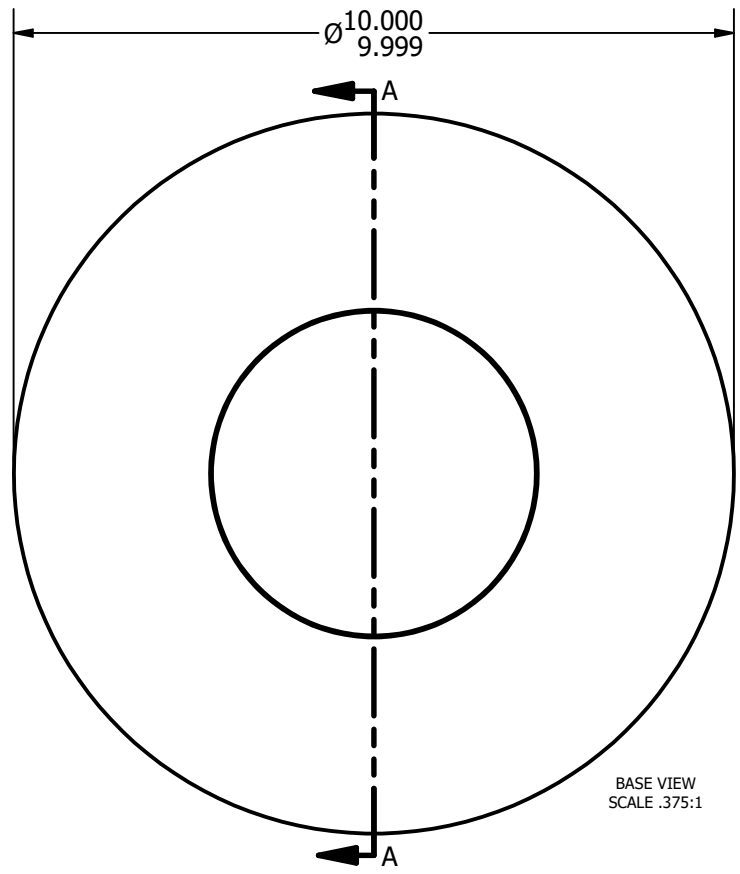
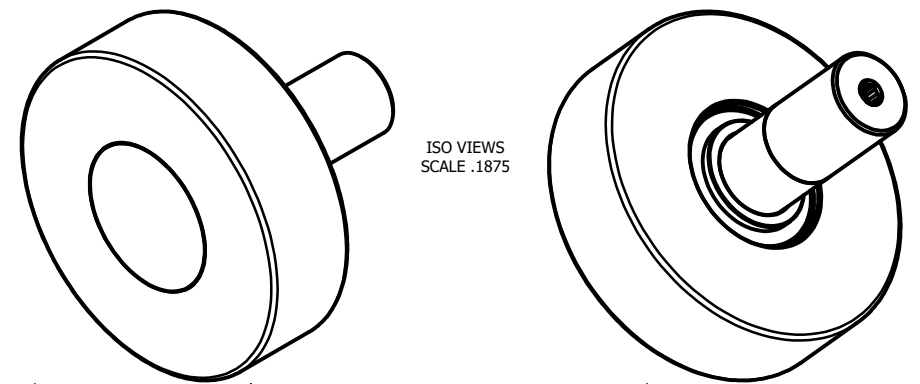


LOAD RATINGS	
RATING	Lbs
RADIAL BASIC DYNAMIC	35,800
DYNAMIC THRUST LOAD	33,200
MAXIMUM STATIC CAPACITY	60,000

NOTES:  
 1. BEARING IS PACKED WITH LITHIUM BASED #2 WEIGHT GREASE  
 2. OUTER & ENDCAP: ALL EXPOSED SURFACES MAY HAVE BLACK OXIDE



**MATERIAL NOTES:**  
 OUTER - BEARING STEEL, HEAT TREATED  
 STUD - COLD ROLLED STEEL  
 END CAP - COLD ROLLED STEEL  
 WASHER - COLD ROLLED STEEL  
 SEAL - SYNTHETIC WITH COLD ROLLED STEEL CORE  
 BEARING ASSY. - 395LA-90329

CUSTOMER PART#	.XX = ± .01 .XXX = ± .005 .XXXX = ± .0005 ANGLES = ± 1' INCH [METRIC]
CHANGE NOTE:	

CARTER MANUFACTURING IS NOT RESPONSIBLE FOR TYPOGRAPHICAL ERRORS	
REVISION	
<b>A</b>	AUTHOR. BY
REV. BY	DATE
SGW	

<b>CARTER MANUFACTURING CO., INC.</b>				
GRAND HAVEN, MICHIGAN 49417				
PART NAME: ASSEMBLY			SHEET 1 OF 2	
AUTHOR. BY	DRAWN BY	CHK'D BY	SALES	MATERIAL
	SGW			NOTED
DATE	DATE	DATE	DATE	DRAWING NO.
	3/18/2010			PHR-1000-A