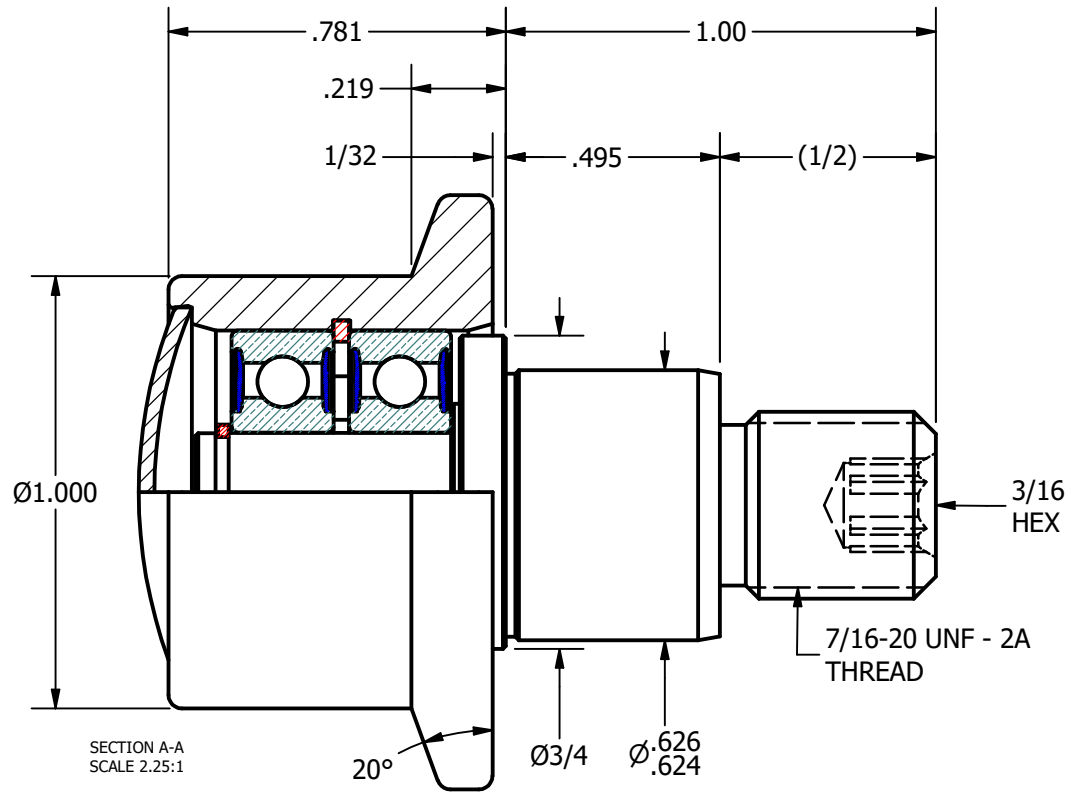
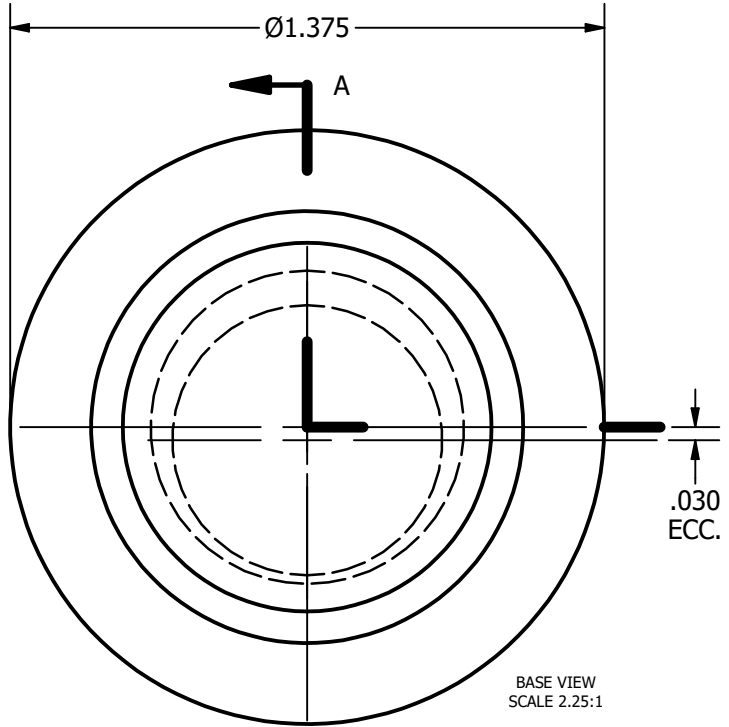
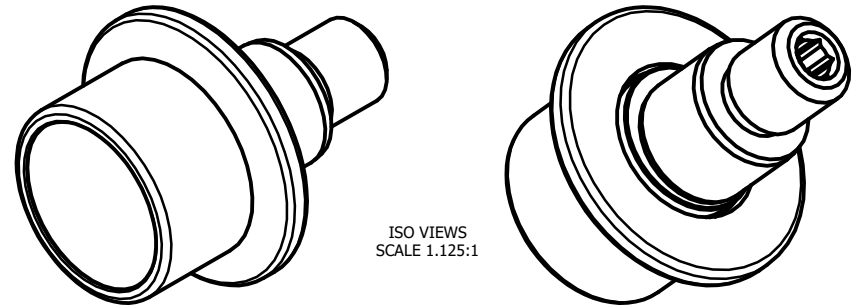


LOAD RATINGS	
RATING	Lbs
RADIAL BASIC DYNAMIC	630
STATIC THRUST LOAD	140
MAXIMUM STATIC CAPACITY	230

- NOTES:
1. BALL BEARINGS COME PRE-PACKED WITH GREASE
 2. STUD & END CAP: ALL EXPOSED SURFACES HAVE BLACK OXIDE



MATERIAL NOTES: OUTER ROLLER- BEARING STEEL, HEAT TREATED STUD - COLD ROLLED STEEL BEARING ASSY. - 607.2RS SNAP RINGS - SPRING STEEL END CAP - COLD ROLLED STEEL	CUSTOMER PART#	.XX = ± .01 .XXX = ± .005 .XXXX = ± .0005 ANGLES = ± 1' INCH [METRIC] FRACTION = ± 1/32	CARTER MANUFACTURING IS NOT RESPONSIBLE FOR TYPOGRAPHICAL ERRORS		CARTER MANUFACTURING CO., INC. GRAND HAVEN, MICHIGAN 49417						
			REVISION		PART NAME: ASSEMBLY					SHEET 1 OF 2	
	CHANGE NOTE:		A	AUTHOR. BY	DRAWN BY	CHK'D BY	SALES	MATERIAL			
				DB	SGW	MD	KR	NOTED			
			REV. BY	DATE	DATE	DATE	DATE	DRAWING NO.			
			SGW	6/18/2012	6/15/2012	6/18/2012	6/18/2012	FHRE-100-A			