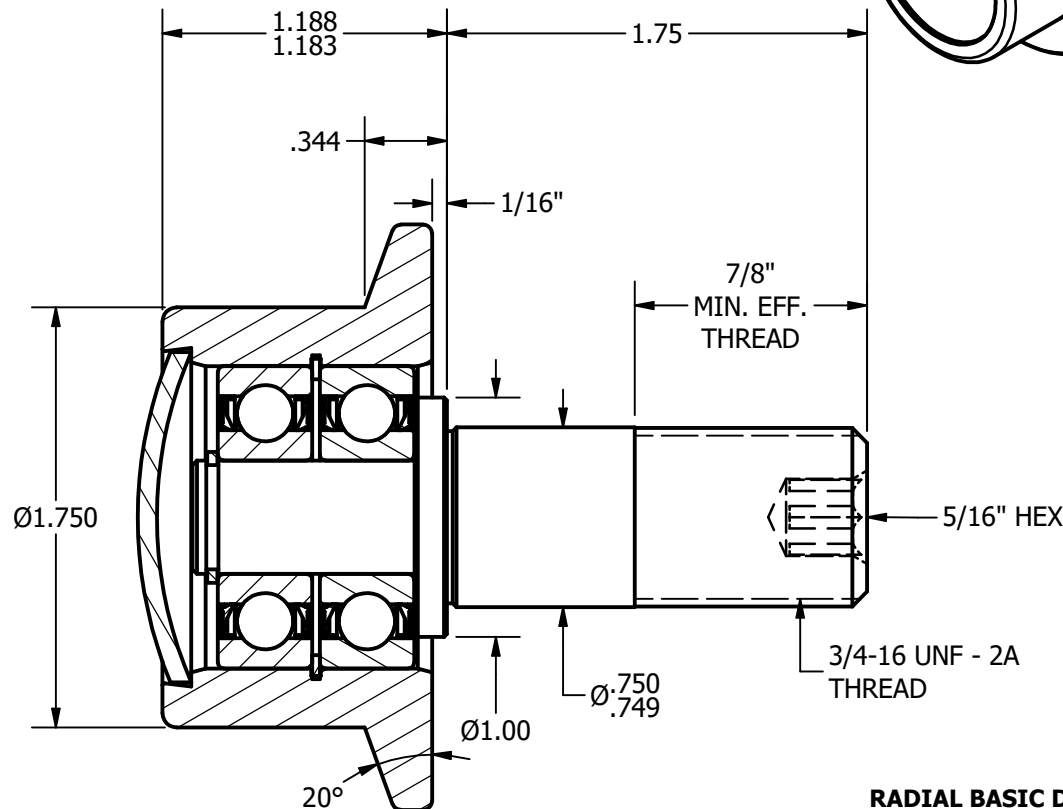
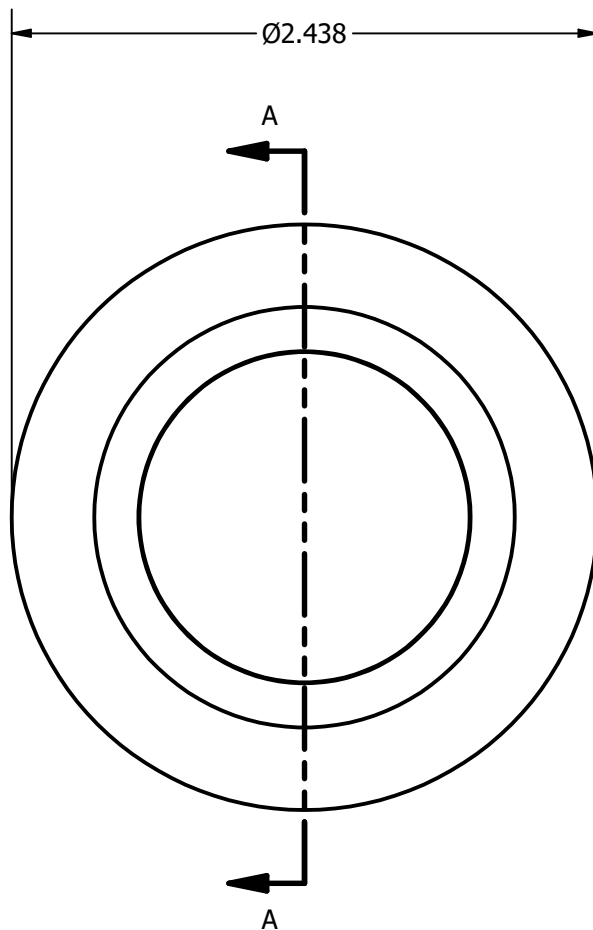


NOTES:  
1. BEARINGS ARE PACKED WITH GREASE

DRAWING NO. FHR-175-A



RADIAL BASIC DYNAMIC  
RATING (POUNDS) 2520

DYNAMIC THRUST LOAD  
RATING (POUNDS) 1320

MAXIMUM STATIC CAPACITY  
(POUNDS) 1370

MATERIAL NOTES:  
OUTER - BEARING STEEL, HEAT TREATED  
STUD - STRESSPROOF  
BEARINGS - 6201-2RS PURCHASED  
RETAINING RINGS - SPRING STEEL  
END CAP - COLD ROLLED STEEL

CUSTOMER PART#

.XX =  $\pm .01$   
.XXX =  $\pm .005$   
.XXXX =  $\pm .0005$   
ANGLES =  $\pm 1^\circ$   
INCH [METRIC]

CARTER MANUFACTURING IS  
NOT RESPONSIBLE FOR  
TYPOGRAPHICAL ERRORS

**CARTER MANUFACTURING CO., INC.**

GRAND HAVEN, MICHIGAN 49417

REVISION

PART NAME: FHR-175 ASSEMBLY

SHEET 1 OF 2

**B**

AUTHOR. BY

DRAWN BY

CHK'D BY

SALES

MATERIAL

DB

RAM

SGW

KPR

NOTED

REV. BY

DATE

DATE

DATE

DATE

DRAWING NO.

MD

2/17/2009

12/31/1996

2/17/2009

12/30/1996

FHR-175-A