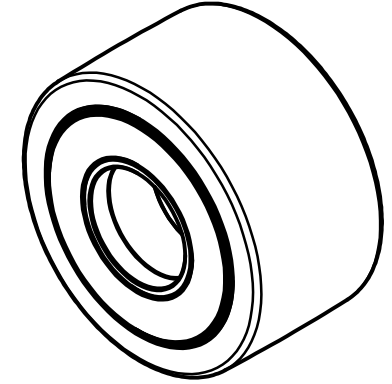
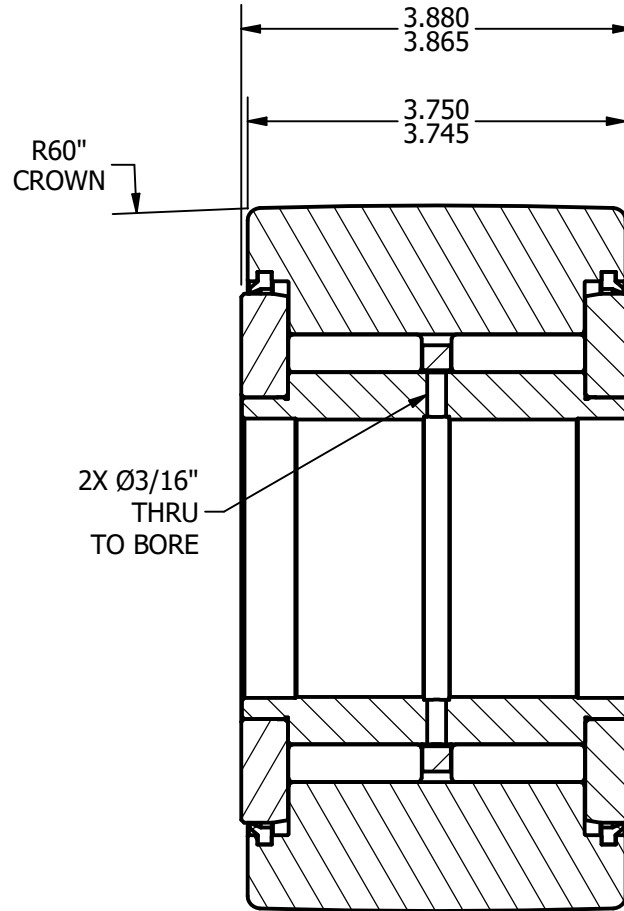
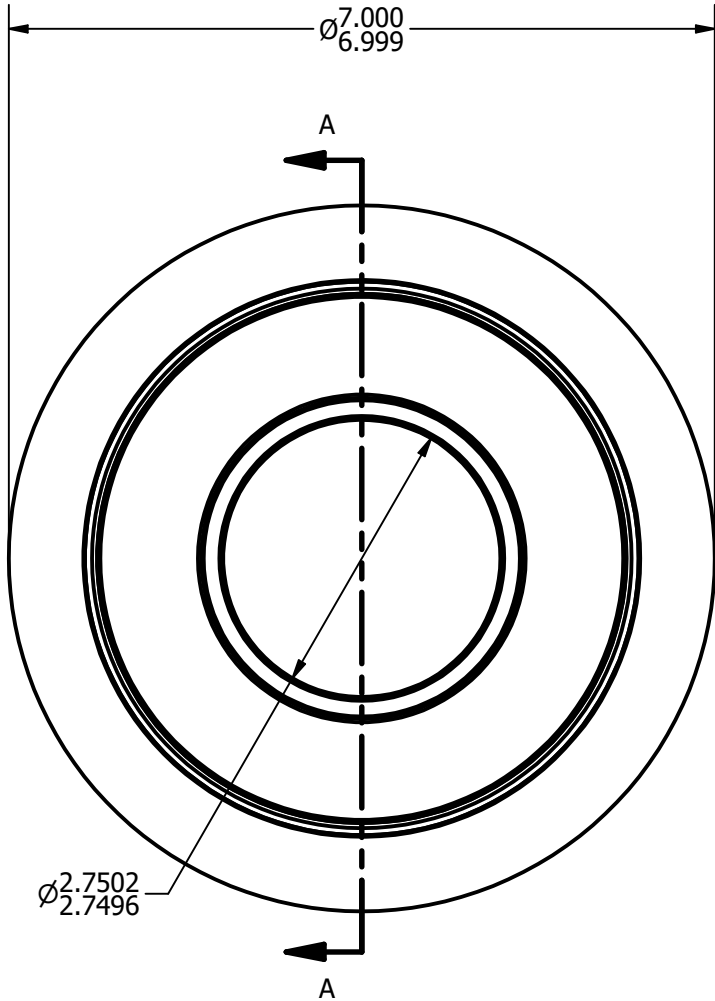


NOTES:

- 1. BEARING IS PACKED WITH GREASE
- 2. ALL EXPOSED SURFACES ARE BLACK OXIDED



SECTION A-A
SCALE .525

RADIAL BASIC DYNAMIC RATING (POUNDS) 75,380

MAXIMUM STATIC CAPACITY (POUNDS) 213,860

MATERIAL NOTES:

- OUTER - BEARING STEEL, HEAT TREATED**
- STUD - BEARING STEEL, HEAT TREATED**
- ROLLERS - BEARING STEEL, HEAT TREATED**
- SPACER - BEARING STEEL, HEAT TREATED**
- WASHERS - COLD ROLLED STEEL, HEAT TREATED**
- SEALS - SYNTHETIC**

CUSTOMER PART#

.XX = $\pm .01$
 .XXX = $\pm .005$
 .XXXX = $\pm .0005$
 ANGLES = $\pm 1'$
 INCH [METRIC]

CARTER MANUFACTURING IS NOT RESPONSIBLE FOR TYPOGRAPHICAL ERRORS

CARTER MANUFACTURING CO., INC.

GRAND HAVEN, MICHIGAN 49417

REVISION

PART NAME: ASSEMBLY

SHEET 1 OF 2

CHANGE NOTE:

B

AUTHOR. BY

DRAWN BY

CHK'D BY

SALES

MATERIAL

DB

MD

SGW

KR

NOTED

REV. BY

DATE

DATE

DATE

DATE

DRAWING NO.

MD

1/28/2009

8/3/2006

1/28/2009

1/28/2009

CYNB-224-S