

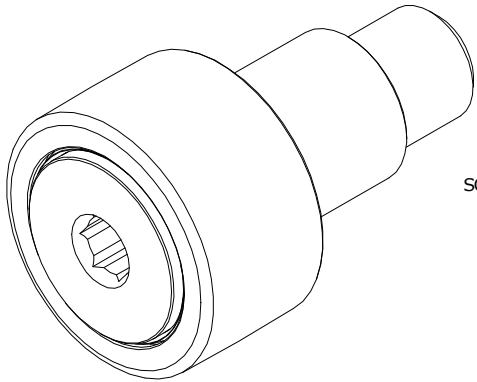
LOAD RATINGS		
RATING	Lbs	Newtons
RADIAL BASIC DYNAMIC	1,490	6,628
MAXIMUM STATIC CAPACITY	1,500	6,672

RECOMMENDED MOUNTING HOLE Ø		
Limit	Inch	mm
MIN	.502	12.5708
MAX	.504	12.8016

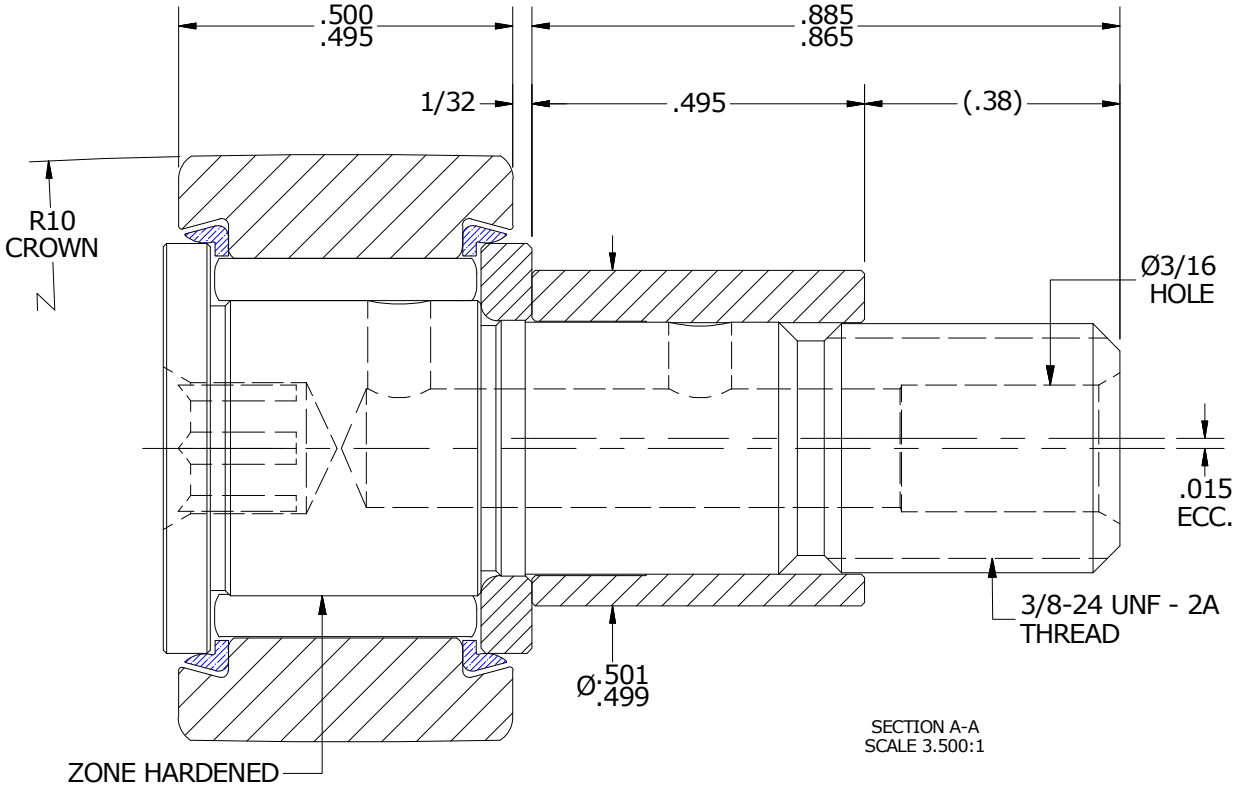
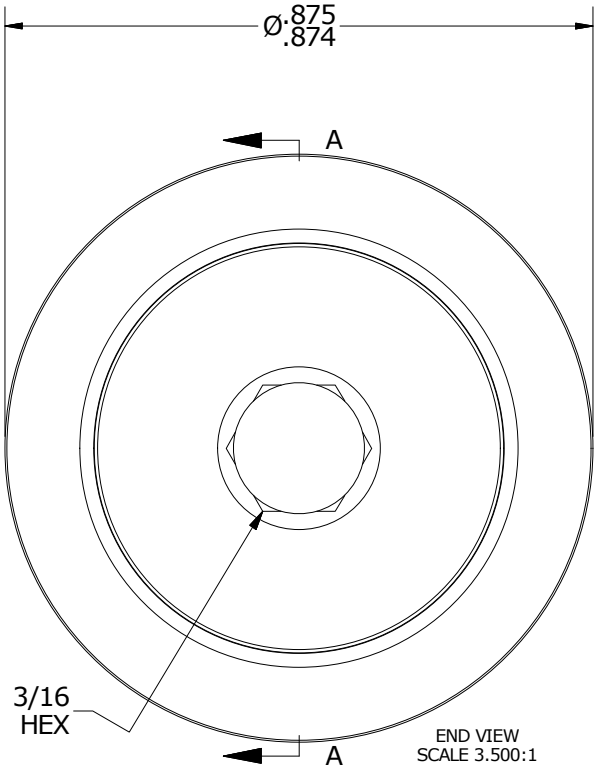
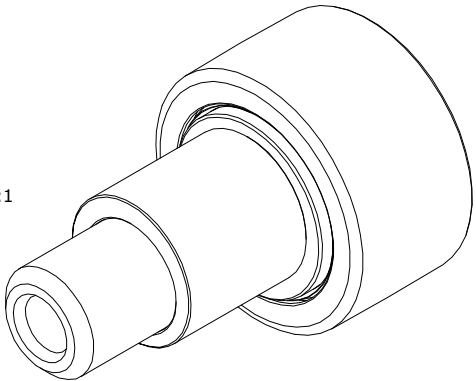
MAXIMUM CLAMPING TORQUE		
Thread Type	Inch Lbs	Nm
DRY	95	11
LUBRICATED	47.5	5.5

- NOTES:
- BEARING IS PACKED WITH NLGI GRADE 2, H1, FOOD GREASE (UNLESS OTHERWISE SPECIFIED)
 - LIMITING SPEED:
A. GREASE = 5,400 RPM

MS NO.	NSN NO.	DRAWING NO.	CSCE-28-SB
--------	---------	-------------	------------



ISO VIEW
SCALE 1.750:1



MATERIAL NOTES:

OUTER RING - 440C STAINLESS STEEL, HEAT TREATED
 STUD - 440C STAINLESS STEEL, ZONE HARDENED
 NEEDLE ROLLER(S) - 440C STAINLESS STEEL, HEAT TREATED
 WASHER - 440C STAINLESS STEEL, HEAT TREATED
 ECCENTRIC SLEEVE - 300 SERIES STAINLESS STEEL
 SEAL(S) - SYNTHETIC

CUSTOMER PART#

XX = ± .01
 XXX = ± .005
 XXXX = ± .0005
 ANGLES = ± 1°
 INCH [METRIC]
 FRACTION = ± 1/32

CARTER MANUFACTURING IS
 NOT RESPONSIBLE FOR
 TYPOGRAPHICAL ERRORS

CARTER MANUFACTURING CO., INC.
 GRAND HAVEN, MICHIGAN 49417

ENGINEERING CHANGE ORDER NOTE

REVISION

PART NAME: ASSEMBLY

B

AUTHOR BY
 HG

DRAWN BY
 JAF

CHK'D BY
 MD

SALES
 KR

MATERIAL
 NOTED

REVISION BY
 SGW

DATE
 5/5/2017

DATE
 8/25/2006

DATE
 5/4/2017

DATE
 5/5/2017

SHEET
 1 OF 2