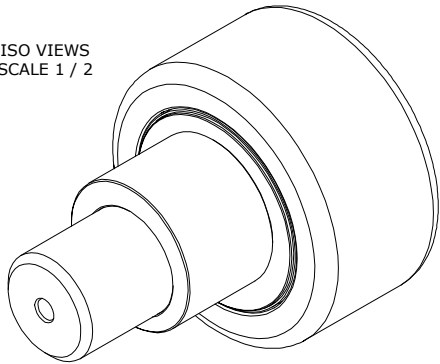
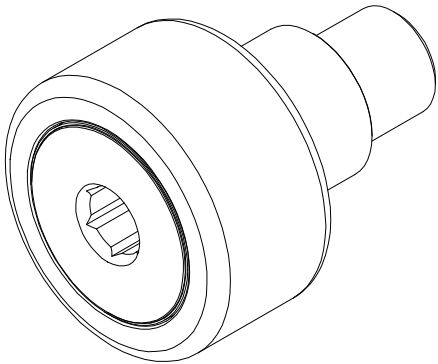


LOAD RATINGS		
RATING	Lbs	Newtons
RADIAL BASIC DYNAMIC	15,720	69,926
MAXIMUM STATIC CAPACITY	24,910	110,805

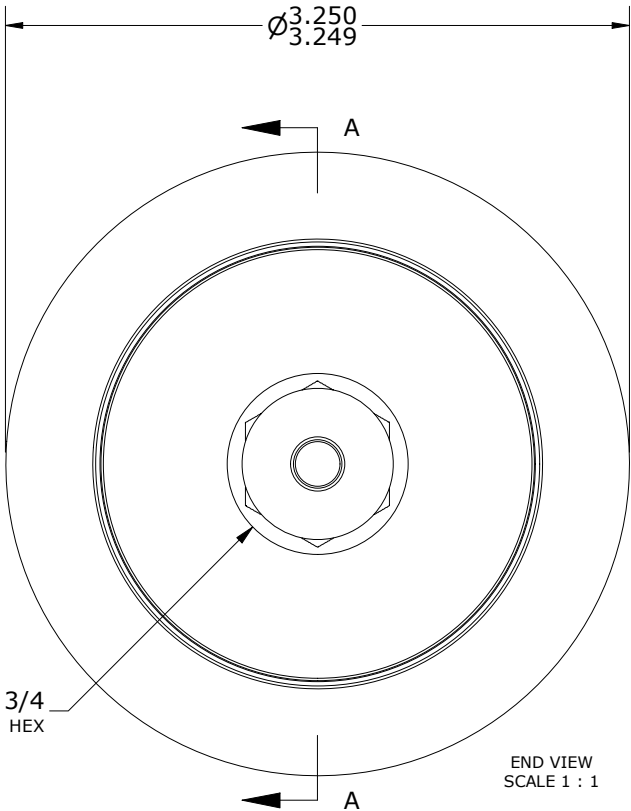
RECOMMENDED MOUNTING HOLE		
LIMIT	Inch	mm
MIN.	1.752	45.5008
MAX.	1.754	44.5516

MAXIMUM CLAMPING TORQUE **		
LIMIT	Inch	mm
Thread Type	Inch lbf	Nm
LUBRICATED	1,725	195

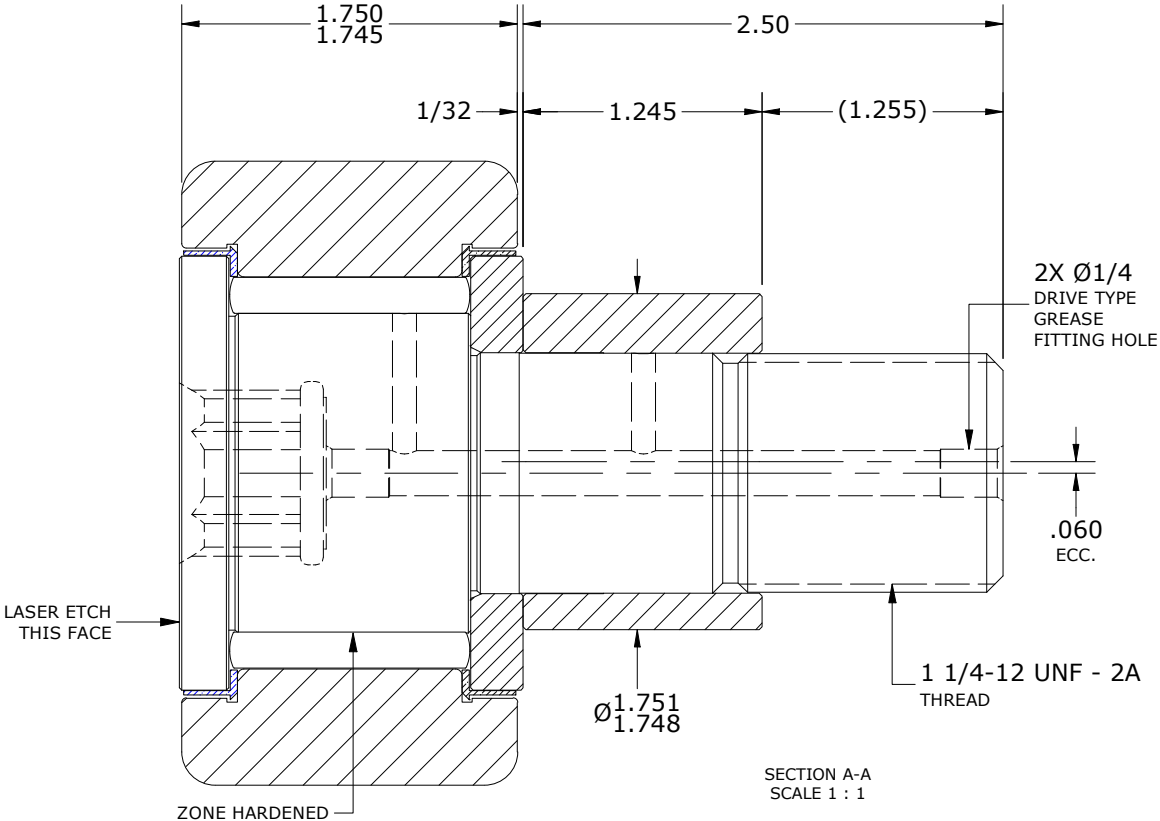
- NOTES:
1. BEARING IS PACKED WITH NLGI GRADE 2, LITHIUM BASED GREASE UNLESS OTHERWISE SPECIFIED
 2. ALL EXPOSED SURFACES HAVE BLACK OXIDE
 3. CUSTOM LASER ETCHING AVAILABLE UPON REQUEST
 4. LIMITING SPEED:
 - A. GREASE = 880 RPM



ISO VIEWS
SCALE 1 / 2



END VIEW
SCALE 1 : 1



SECTION A-A
SCALE 1 : 1

** TORQUE SPECIFICATION IS BASED ON LUBRICATED THREADS, IF USING CLEAN DRY THREADS DOUBLE TORQUE VALUE.

MATERIAL NOTES:

OUTER RING: BEARING STEEL, HEAT TREATED
STUD: BEARING STEEL, ZONE HARDENED
NEEDLE ROLLER(S): BEARING STEEL, HEAT TREATED
WASHER: BEARING STEEL, HEAT TREATED
SEAL(S): SYNTHETIC
ECCENTRIC SLEEVE: STEEL

CUSTOMER PART#	XX = ± .01 XXX = ± .005 XXXX = ± .0005 ANGLES = ± 2' INCH [METRIC] FRACTION = ± 1/64
ENGINEERING CHANGE ORDER NOTE	

CARTER MANUFACTURING IS NOT RESPONSIBLE FOR TYPOGRAPHICAL ERRORS					
REVISION					
PART NAME: Assembly			PRODUCT TYPE: CNB		
B	AUTHOR BY HG	DRAWN BY JAF	CHK'D BY MD	SALES NC	MATERIAL NOTED
REVISION BY SGW	DATE 12/5/2022	DATE 7/10/2006	DATE 12/5/2022	DATE 12/5/2022	SHEET 1 OF 2