

LOAD RATINGS		
RATING	lbf	Newtons
RADIAL BASIC DYNAMIC	45,600	202,839
MAXIMUM STATIC CAPACITY	68,000	302,479

NOTES:

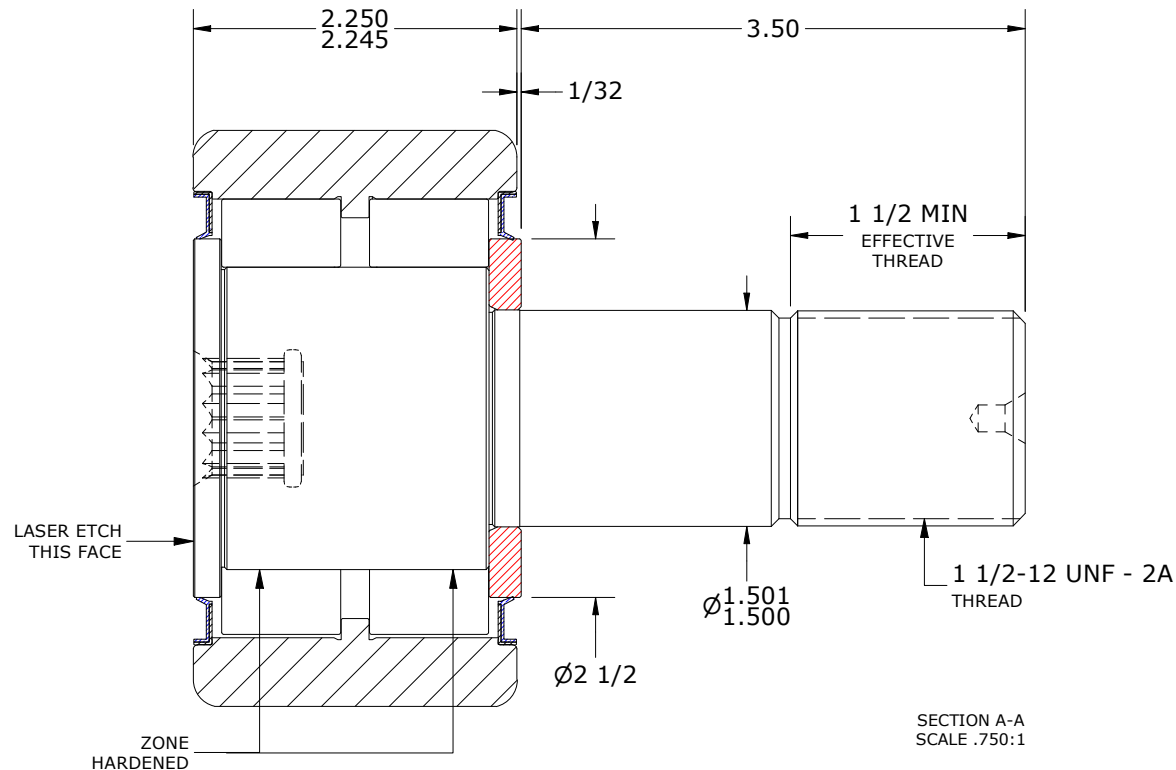
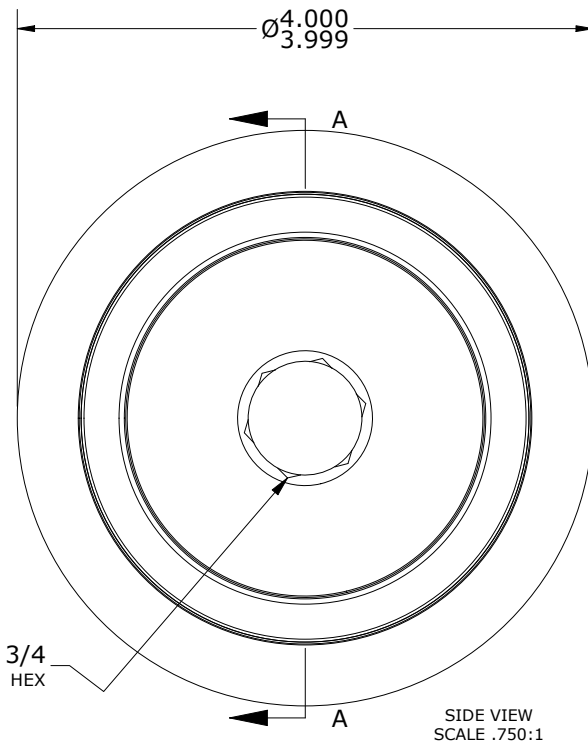
1. BEARING IS PACKED WITH NLGI GRADE 2, LITHIUM BASED GREASE (UNLESS OTHERWISE SPECIFIED)
2. ALL EXPOSED SURFACES AS MOUNTED HAVE BLACK OXIDE
3. LIMITING SPEED:
 - A. GREASE = 2,600 RPM
4. CUSTOM LASER ETCHING UPON REQUEST

RECOMMENDED MOUNTING HOLE Ø		
Limit	Inch	mm
MIN	1.4998	38.0949
MAX	1.5005	38.1127

MAXIMUM CLAMPING TORQUE**		
Thread Type	Inch Lbs	Nm
LUBRICATED	3,000	339



ISO VIEW
SCALE .375:1



**TORQUE SPECIFICATION IS BASED ON LUBRICATED THREADS, IF USING DRY THREADS DOUBLE TORQUE VALUE

MATERIAL NOTES:

- OUTER RING - BEARING STEEL, HEAT TREATED
- STUD - BEARING STEEL, ZONE HARDENED
- ROLLER(S) - BEARING STEEL, HEAT TREATED
- WASHER - STEEL, HEAT TREATED
- SEAL(S) - VB TYPE OIL SEAL

CUSTOMER PART#

XX = $\pm .01$
 XXX = $\pm .005$
 XXXX = $\pm .0005$
 ANGLES = $\pm 1'$
 INCH [METRIC]
 FRACTION = $\pm 1/32$

CARTER MANUFACTURING IS NOT RESPONSIBLE FOR TYPOGRAPHICAL ERRORS

CARTER MANUFACTURING CO., INC.

GRAND HAVEN, MICHIGAN 49417

ENGINEERING CHANGE ORDER NOTE

REVISION

PART NAME: ASSEMBLY

PRODUCT TYPE: CDR

A

AUTHOR BY

DRAWN BY

CHK'D BY

SALES

MATERIAL

HG

SGW

MD

NC

NOTED

REVISION BY

DATE

DATE

DATE

DATE

SHEET

SGW

4/27/2022

2/18/2022

4/26/2022

4/27/2022

1 OF 2